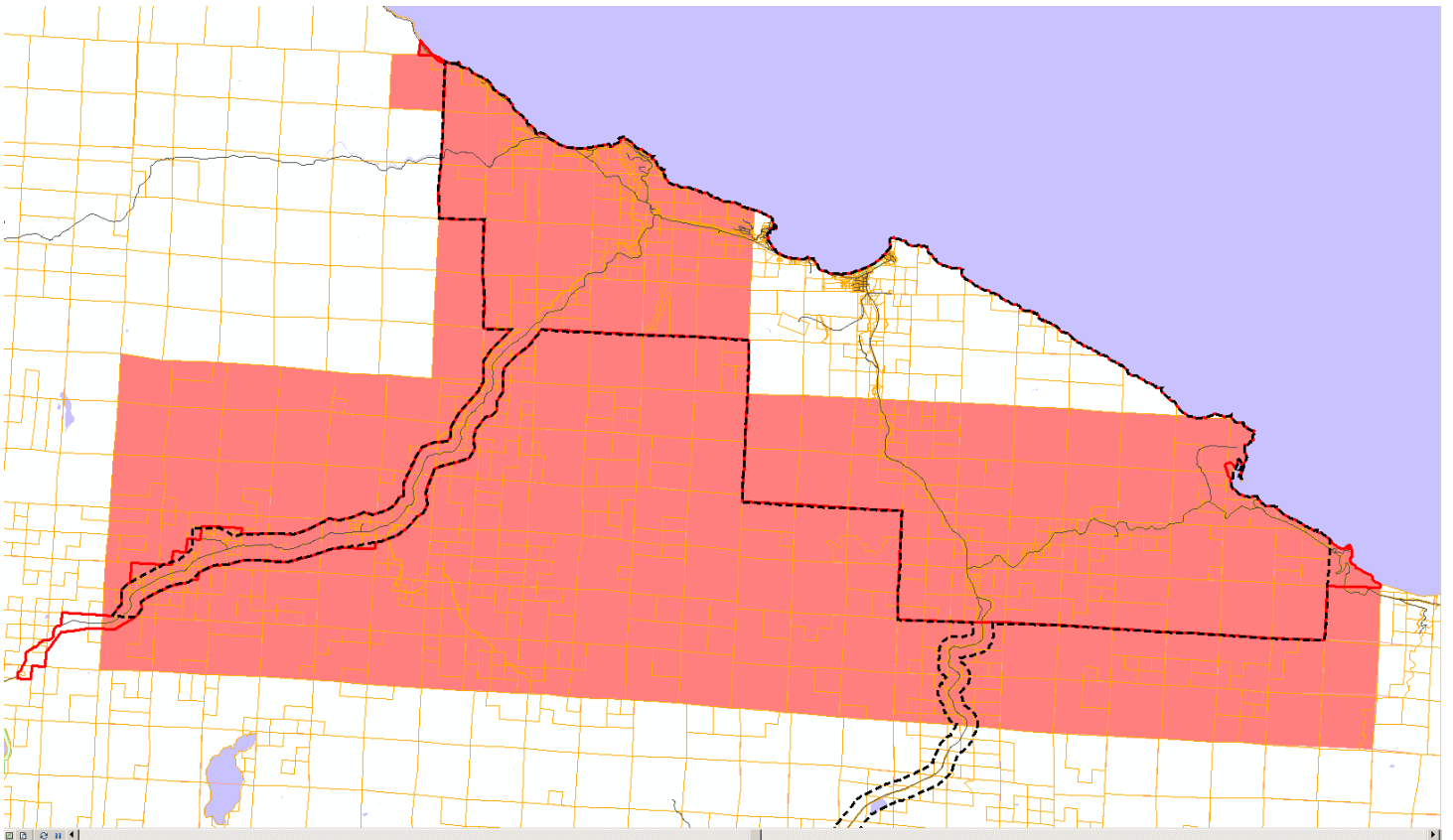


CLALLAM COUNTY FIRE DISTRICT #5 ANNEXATION LEGAL DESCRIPTION

Those portions of the following described Lands not already included in the Clallam County Fire District #5 Boundaries:

Township 31N, Range 11W;
Township 31N, Range 12W;
Township 31N, Range 13W;
Township 31N Range 14W;
Township 32N, Range 13W;
Section 31, Township 33, Range 13 W;
Section 1, Township 32N, Range 14W



Pink shaded area depicts proposed annexation. Black dotted lines depict boundary prior to annexation with the exception of Highway 113.

